



# MONTHLY MEMBERSHIP PROGRESS REPORT

District 5M 9

Results as of: 05/31/2018

GMT: MICHAEL MOLEND A

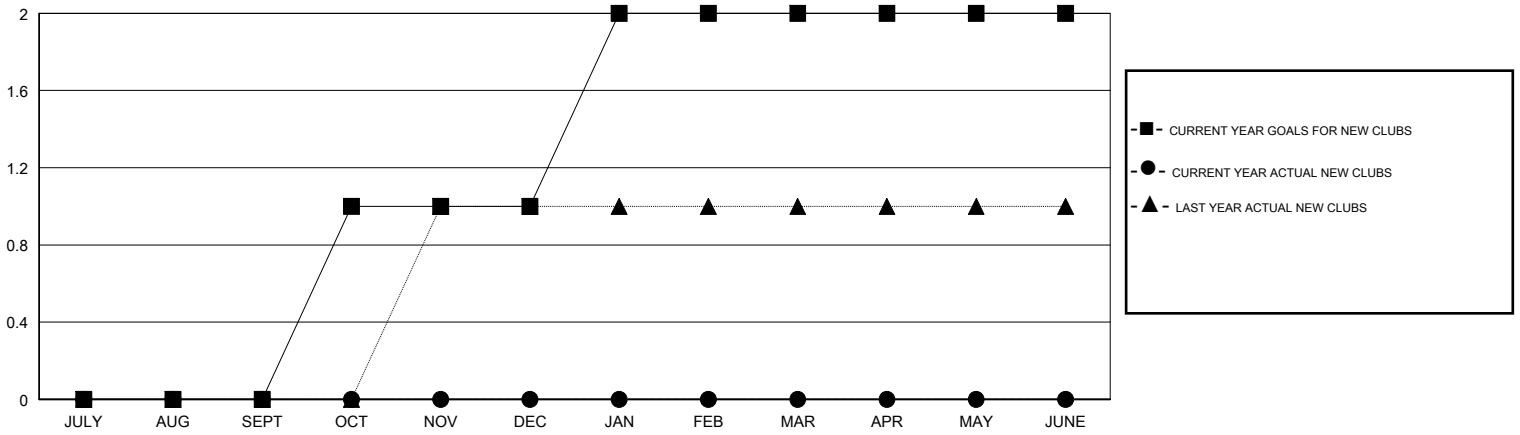
LOCATION MINNESOTA

GMT CA

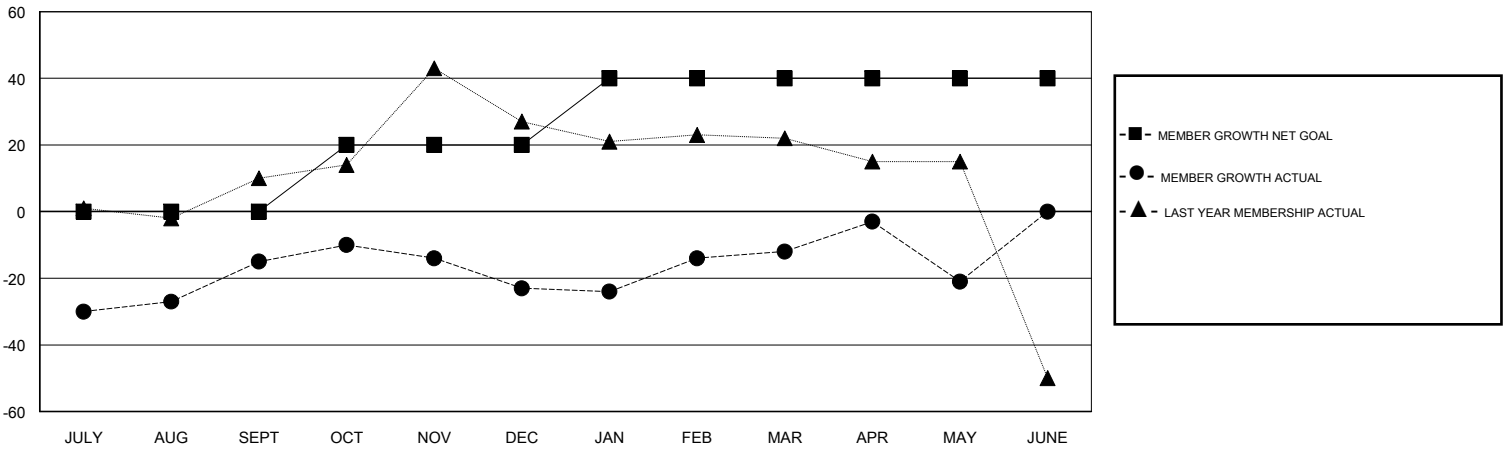
Clubs			
RESULTS FOR 2017-2018			
QUARTER	NEW CLUB GOAL	NEW CLUBS	DROPPED CLUBS
JULY/AUG/SEPT	0	0	0
OCT/NOV/DEC	1	0	0
JAN/FEB/MAR	1	0	0
APR/MAY/JUNE	0	0	0

Members			
RESULTS FOR 2017-2018			
QUARTER	MEMBER GROWTH NET GOAL	MEMBER GROWTH ACTUAL	DROPPED MEMBERS ACTUAL (including transfers)
JULY/AUG/SEPT	0	73	78
OCT/NOV/DEC	20	54	50
JAN/FEB/MAR	20	51	38
APR/MAY/JUNE	0	37	42

GOALS AND ACTUAL NEW CLUBS CUMULATIVE



GOALS AND ACTUAL MEMBERS CUMULATIVE



DROPPED CLUBS: 0

49 CLUBS OF 67 ADDED 1 OR MORE NEW MEMBERS

GENDER DISTRIBUTION	
MALE	1,425 (63.25%)
FEMALE	828 (36.75%)
Women Percentage Fiscal Year Goal: 38%	

DROPPED MEMBERS	
DECEASED	43
CLUB CANCELLED	0
OTHER	166
<b>TOTAL</b>	<b>209</b>

[CLICK HERE FOR CUMULATIVE MEMBERSHIP DATA](#)

TOTAL FAMILY UNIT MEMBERS	745
FAMILY MEMBERS PAYING HALF DUES	376